

LONDON ART FAIR

London Art Fair announces galleries and curated sections for its 35th edition

18-22 January 2023

VIP & Press Preview:

Tuesday 17 January



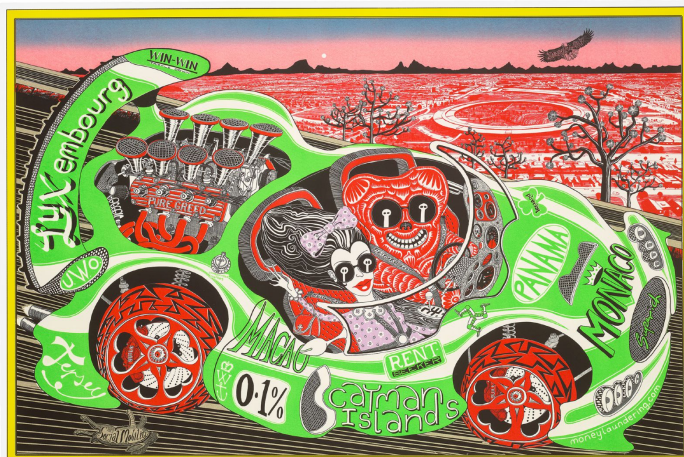
Sir Terry Frost 'Red, Black and Blue Arrows' 1962. Courtesy of Osborne Samuel LAF;
Georgina Maxim 'Two hearts in one' 2022 textile and mixed media. Courtesy Koop Projects LAF

- London Art Fair will return to the UK capital from 18-22 January
- The Fair will include critically-acclaimed curated sections including **NEW for 2023 Encounters** (formerly known as Art Projects), Platform, and Photo50
- Ben Uri Museum and Gallery will be featured as London Art Fair's Museum Partner
- Images: <https://mediacentre.kallaway.com/london-art-fair/image-library>

London Art Fair returns to its traditional January slot from **18-22 January 2023**, launching the international art collecting calendar once again with an exceptional collection of modern and contemporary art. The Fair will offer both seasoned and aspiring collectors a diverse presentation of modern and contemporary art, alongside curated displays, and an inspiring programme of talks, panel discussions and artists insights.

In addition, London Art Fair continues to champion and support regional museums through its annual Museum Partnership, which this year invites the **Ben Uri Gallery and Museum** who will present key highlights from their preeminent collection to the Fair showcasing the rich contribution to British art made by Jewish, immigrant, and refugee artists.

2023 GALLERIES



This year will see the participation of over 100 galleries from around the world, including Iceland, Belgium, America and Sweden, with new exhibitors **Art Gallery O68**, **Willoughby Gerrish**, and **Koop Projects**; alongside returning names such as **Austin Desmond Fine Art**, **Piano Nobile**, and **ARTITLEDcontemporary**. The Fair will

LONDON ART FAIR

also feature work by some of the world's most renowned artists, including works by **Paula Rego, Tracey Emin, Marc Chagall, Roy Lichtenstein, Bridget Riley, Pablo Picasso, Grayson Perry, Salvador Dali, Keith Haring, Jean-Michel Basquiat, and Julien Opie.**

These esteemed artists will be exhibited alongside the next generation of international contemporary names. Contemporary gallery highlights include **The Finch Project, Elizabeth XI Bauer, and Artistellar** - an innovative gallery which launched and showcased exciting emerging talents during the Covid-19 pandemic.

London Art Fair's specialism in Modern Art continues to be strongly represented through the participation of some of the UK's leading galleries in the field. **Terry Frost's** striking 'Red, Black and Blue Arrows' will be showcased by **Osborne Samuel** among other Modern British works. Meanwhile, **Thomas Spencer Fine Art** will present works by **Keith Vaughan, a Henry Moore** painting from a private collection, and **Victor Pasmore** prints from a private collection which were gifted directly to the private source by Victor himself. **The Redfern Gallery** will be celebrating their own centenary year as well as the centenary of **Adrian Heath (1920-1992)** with works from a career that spanned six decades.

Purdy Hicks will be unveiling **Sandra Kantanen's** new series, *Herbarium*, at the Fair for the very first time. The series presents familiar and exotic plants with microscopic precision, revealing the intricacy and delicacy of nature's structures. Alongside this, a display of three fabulous book paintings by **Ralph Fleck**, who's painterly language involves movement between moments of close observation and of objective distance.

Notable thematic presentations include **RAW Editions's** all-woman booth featuring pieces by **Bridget Riley, Louise Bourgeois, and Barbara Kruger** who seek to explore the possibilities of their chosen mediums by engaging in historic, art-historic, political and aesthetic discourse; **Candida Stevens's** ambitious curation titled *If You Could Save One Place*, a significant work created by the collaboration of 12 international artists which demonstrates their response to its title's question. *If You Could Save One Place* encourages contemplation of the varying global reactions to, and ramifications of, climate change. Meanwhile, **Koop Projects's** stand is dedicated to presenting African artists who transform discarded materials to explore themes around individual and collective identity.



LONDON ART FAIR

CURATED SECTIONS

London Art Fair reflects contemporary practice and collecting trends within the art world through its critically-acclaimed sections curated in collaboration with leading experts.

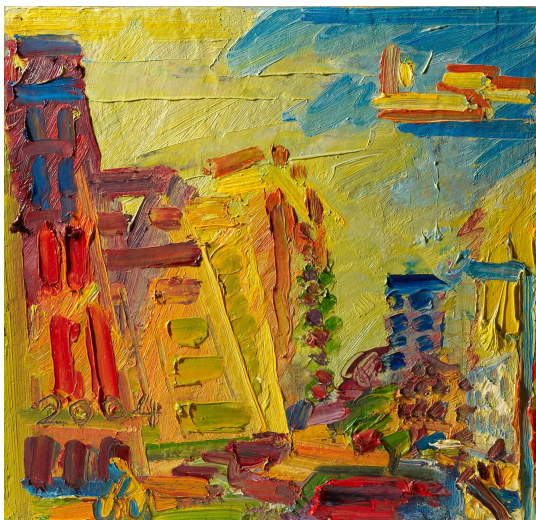
Platform

For the 5th edition of Platform, art historian and author **Ruth Millington** presents a collection of galleries whose artists collaborate with inspiring individuals, reframing the muse as an empowered and active agent in the story of art. This year's edition of Platform, titled '*Reframing the Muse*', invites viewers to consider the instrumental role played by diverse, real-life individuals, past and present, beyond the frame in which they are immortalised.

On display from **Rebecca Hossack Art Gallery**, a contemporary art gallery specialising in Aboriginal, Australian and Western art, will be works by **Nikoleta Sekulovic**, who subverts the tradition of Odalisque portraiture, and portraits by **Carla Kranendonk**. **Gala Fine Art** will be showcasing powerful new work by **Golnaz Afraz**, whose muses are young Iranian women protesters. Male muses are also being showcased by **RAW Editions**, through the male-on-male gaze of **Peter Doig**, **Grayson Perry** and **David Hockney**, whose portrait *Reclining Figure* pays tribute to one of his most significant subjects, Gregory Evans. Audiences, too, are invited to take themselves as their own muse, as they pose before the interactive mirror, *No Photos Please* by **Eve de Haan**.



Museum Partnership - Ben Uri



London Art Fair has partnered with London's **Ben Uri Gallery and Museum** for its annual Museum Partnership. The Museum Partnership provides a prominent London platform and significant opportunity for patrons, collectors and general Fair visitors to engage with an exhibition of exceptional museum quality works – bringing some of our most important regional private collections into the public domain.

The works on display, which include paintings and sculptures, focus on the immigrant experience, speaking to the rich contribution to British art

LONDON ART FAIR

made by Jewish, immigrant, and refugee artists which is Ben Uri's DNA. The collection includes **Frank Auerbach's** *Mornington Crescent*, *Summer Morning II*, **David Bomberg's** *Racehorses* and an artwork by British-Iranian visual artist **Zory Shahrokhi** which was commissioned by Ben Uri in response to *Liberators: 12 Extraordinary Women Artists from the Ben Uri Collection*.

In 2018, the Museum published a transformative Strategic Plan which propelled a prescient shift to create the first full-scale digital museum and research centre which complemented Ben Uri's vibrant gallery programming. The redefined, fully digitised unique collection reflects the wider immigrant landscape and contribution to British Art, including 880 works by 390 artists from 45 different countries of birth.

Encounters

Encounters is a new section launching at London Art Fair 2023 curated by journalist, curator, and member of the Encounters Selection Committee, **Pryle Behrman**. Formerly Art Projects, **Encounters** is a showcase of the freshest contemporary art from across the globe featuring young, up and coming galleries eager to present their emerging artists on a major platform alongside established names who are creating new and exciting work, taking their practice in a different direction.

The new section of curated solo and group presentations is where the two meanings of the word 'encounter' meet. An encounter is often unexpected, perhaps leading to the discovery of an unknown artist or, alternatively, an unexpected style or theme; an encounter can also suggest a confrontation between opposing positions and artworks that challenge entrenched views and understandings.

Highlights include a display by **Shame Gallery** whose pieces by **Nathan French**, originally a fashion designer, reference the multiplicity of tempers, moods and thoughts that occur inside every one of us; **Catherine Anholt's** paintings at **TIN MAN ART** see the artist exploring a range of emotions and experiences spanning childhood, parenting, the natural world, birth and death, having previously been primarily known as an author and illustrator of children's books. At **April Contemporary**, an installation by **Luqmaan Godfrey** – the artist alter ego of muralist **Damilola Odusote** – combines mixed media drawings, poems, texts, collages, and murals to present 'reality' as a continually changing map that is both malleable and wholly transient.



LONDON ART FAIR

Photo50

Photo50 is the Fair's critical forum for examining distinctive elements in contemporary photography. For 2023, Photo50 is curated by **Pelumi Odubanjo** and **Katy Barron**, who will present the work of a group of multigenerational women and non-binary photographers whose practice engages with their Black and diasporic heritage. Through their lens, the exhibition will explore domestic life and the idea of 'home'.

The exhibition echoes **Saidiya Hartmann's** *Wayward Lives, Beautiful Experiments: Intimate Histories of Riotous Black Girls, Troublesome Women, and Queer Radicals*, as such, this year's exhibition is named **Beautiful Experiments**. **Beautiful Experiments** includes works from the 1980s through to the present day and presents diverse imagery by artists that reflects their histories and personal ideas of home and identity. The exhibition will think through ideas of 'home' in a number of ways - as a safe space, a queer space, an invisible space, a space of isolation, a place of memory, and the notion of home outside of the family home. It will consider the difference between generational approaches, and the wide-ranging uses of photographs and archival materials.



-ENDS-

NOTES TO EDITORS:

LONDON ART FAIR - 18 – 22 January 2023

Business Design Centre, 52 Upper St, London N1 0QH

Full ticket types and prices at: www.londonartfair.co.uk/tickets

For the latest news, follow @LondonArtFair on Facebook, Twitter and Instagram (#LAF23)

PRESS CONTACT

LONDON ART FAIR

For further information please contact Kallaway: londonartfair@kallaway.com

Telephone: 07867794989

IMAGE CREDITS From top to bottom, left to right

- Sir Terry Frost 'Red, Black and Blue Arrows' 1962. Courtesy of Osborne Samuel LAF
- Georgina Maxim 'Two hearts in one' 2022 textile and mixed media. Courtesy Koop Projects LAF
- Grayson Perry 'Sponsored by You' 2019 etching. Courtesy of RAW Editions LAF
- Sandra Kantanen 'Bishop's weed' 2022 pigment print 132 x 75 cm or 54.5 x 31.8 cm. Courtesy of Purdy Hicks LAF
- Carla Kranendonk 'Couple in Balance' 2012 hand embroidery, beadwork, acrylic and collage on canvas 190 x 150 cm. Courtesy of the Rebecca Hossack Art Gallery LAF
- Frank Auerbach 'Mornington Crescent - Summer Morning II' 2004 oil on board 51.1 x 51.1 cm. Courtesy of the Ben Uri Museum and Gallery LAF
- Catherine Anholt 'Love Life Loss' 2022 oil on linen 50 x 38 cm. Courtesy of TIN MAN ART LAF
- Adaeze Ihebom 'The Artist's Room' 2022 photography. Courtesy of Adaeze Ihebom LAF

DATES

Press Preview

Tuesday 17 January: 11am – 2pm

VIP Preview

Tuesday 17 January: 2pm – 5pm

Fair Times

Preview Evening: Tuesday 17 January: 5pm-9pm

Wednesday 18 January: 11am – 9pm

Private View: Wednesday 18 January: 5pm-9pm

Thursday 19 January: 11am – 9pm

Thursday Late 19 January: 5pm – 9pm

Friday 20 January: 11am – 7pm

Saturday 21 January: 11am – 7pm

Sunday 22 January: 11am – 5pm

LONDON ART FAIR

EXHIBITOR LIST

155A Gallery Advanced Graphics London Alan Wheatley Art Aleph Contemporary April Contemporary Architectural Heritage Ltd Art First Art Gallery O-68 Art Mûr ARTE GLOBALE Artistellar Gallery ARTITLEDcontempor ary Austin / Desmond Fine Art Beardsmore Gallery Beaux Arts Bath Broadbent Browse & Darby Cactus Moon Studio Candida Stevens Gallery Castlegate House Gallery Cavaliere Finn CHARLIE SMITH london	Christopher Kingzett Fine Art Circle Contemporary Columbia Road Gallery Crane Kalman Brighton Crane Kalman Gallery Cross Lane Projects Darl-e and the Bear David Messum Fine Art DOMOBAAL Duncan R Miller Fine Arts ECAD Gallery Elizabeth Xi Bauer Fiumano Clase Gala Fine Art Galerie Calderone Galerie Olivier Waltman Galleri Fold Gallery Different GBS Fine Art Ltd Gilden's Arts Gallery Glasgow Print Studio Goodman Fine Art Limited	Hang Up Gallery Hidden Gallery Horton London James Freeman Gallery Janet Rady Fine Art Jealous Gallery Jenna Burlingham Fine Art Jill George Gallery Julian Page K+Y Gallery Kevin Kavanagh Kittoe Contemporary Koop Projects Ltd Lemon Street Gallery Long & Ryle MADEINBRITALLY Marcus Campbell Art Books Mollbrinks Art Gallery Narborough Osborne Samuel Ltd Panter & Hall Piano Nobile Portal Painters Portland Gallery Purdy Hicks Gallery Quantum Contemporary Art	Rabley Contemporary RAW Editions Rebecca Hossack Art Gallery Redfern Gallery Rowntree Clark Rup & Form Shame Gallery Shtager Gallery SIGNET CONTEMPORARY ART Stoney Road Press TAG Fine Arts Tanya Baxter Contemporary The Finch project The Nine British Art Thomas Spencer Fine Art Thompson's Gallery TIN MAN ART Union Gallery VirginiaVisualArts Wilder Gallery Willoughby Gerrish Zuleika Gallery
---	---	---	--

ABOUT LONDON ART FAIR

London Art Fair was founded in 1989 by London's Business Design Centre in Islington – where the Fair still takes place today – with the aim of providing a space to showcase exceptional Modern and Contemporary Art, to discover and to buy. Launching with just 36 UK galleries, the Fair has grown steadily over the years with well over 100 galleries now regularly exhibiting.

LONDON ART FAIR

The Fair provides a home for Modern British Art, as well as, embracing an increasingly international and contemporary outlook, with new galleries from around the world expanding our offer and reach – these now make up 25% of our exhibitors, and continue to grow.

The London Art Fair nurtures collecting at all levels, from prints and editions starting in the hundreds, to major works by internationally renowned artists including works by Grayson Perry, Bridget Riley, Henry Moore, and David Bomberg.

Providing a platform for nurturing talent the London Art Fair has played host to acclaimed artists early in their career as well as established names, with Chris Ofili and Jenny Saville awarded 'rising star' awards at the 1996 edition.

The Fair's extensive gallery line up showcases a diverse cross-section of art from emerging talent to established art world favourites; alongside an inspiring programme of curated talks, panel discussions and artists insights.

LONDON ART FAIR

[Home - London Art Fair Photo50 - London Art Fair](#)

PARTNERS

Artscapey - Official Digital Partner

Artscapey is London Art Fair's digital partner. Their online platform makes art buying, collecting & investing accessible, with a collection management system built for new & experienced collectors and a curated marketplace of museum grade art. To celebrate 2023's partnership, Artscapey is offering free 6-months insurance on any art piece purchased at London Art Fair 2023.



[Artscapey : Built by Collectors for Collectors](#)

Visit Malta - Official Destination Partner

Famous for its bountiful art and culture, Malta is certainly a destination that should be on everyone's 2023 travel list. In addition to its delicious gastronomy and incredible experiences, the Maltese art scene is one not to ignore. Malta's art is varied and rich and over the years

LONDON ART FAIR

Maltese art decorated Knights' palaces and churches. With amazing art galleries such as Muza and the National Gallery of fine art, Malta is the ideal getaway for art and history lovers.



[Visit Malta - The Official Tourism Site for Malta, Gozo and Comino - Visit Malta](#)

Dragon Argent - Official Legal Partner

Dragon Argent provides legal advice on a range of services including art and luxury assets, corporate and commercial transactions. As commercial and creative industry specialists, Dragon Argent strives to obtain the best results for its clients, which include businesses, collectors, artists and investors.

<https://www.dragonargent.com/>

Audley - Official Travel Partner

Audley Travel is a tour operator with more than 25 years' experience in creating meaningful travel experiences. A trip with Audley is created completely around you, from the experiences you have to the places you stay. By understanding the meaning behind why you want to travel, Audley's award-winning specialists can create experiences that will change your perspective and stay with you long after you've returned home.

<https://www.audleytravel.com/>

Author - Official Furniture Partner

Author provides a unique selection of luxury, contemporary furniture and home accessories handcrafted across the British Isles. These functional art pieces are designed and made to be loved for a lifetime and will be on display and available to purchase in the VIP lounge during the Fair. Many of AUTHOR's curated, original pieces can be customised to order with an authentication certificate creating true, one-of-a-kind investment pieces for the home.

<https://www.authorinteriors.com/>

Full list of Sponsors and Partners can be found here:

[Sponsors and Partners - London Art Fair](#)